

BRINGING

Joy to Life




Westminster
Canterbury
ON CHESAPEAKE BAY
FOUNDATION



peace of mind:

a mental state of calmness or tranquility, an absence from worry and anxiety.

Church and civic leaders aimed to establish a premier non-profit Life Plan Community to serve the Hampton Roads region, and to the extent possible, make it accessible to people regardless of financial means.





Peace of Mind: Priceless

J. Benjamin Unkle, Jr.

President & CEO, Westminster-Canterbury on Chesapeake Bay

Dear Friends and Supporters:

Two Christian denominations founded Westminster-Canterbury on Chesapeake Bay more than 42 years ago. Since then, we have always tried to expand the number of people who can afford community living in three ways.

First, we charge one-third of our apartments at fees twenty percent below the cost of services rendered to the residents who live in them. **Second**, and in addition to this discounted pricing, we raise and maintain a Fellowship Fund to bridge gaps in financial qualification. **Third**, we use the Fellowship Fund to assure all who have accepted residency here lifetime services, even if they outlive their personal funds through no fault of their own. This is priceless peace of mind for every resident.

Lifetime residence and healthcare are expensive promises. Our pricing and Fellowship Fund provide \$2.6M per year in care to those who would not otherwise live at Westminster. We are proud of this annual charity figure.

Our Foundation also supports our team members with scholarships and emergency grants when car repairs and other sudden bills threaten devastating hardship and insecurity to families.

Enjoy this 2023 Annual Stewardship Report and see the many ways we help older adults, team members, and our broader community. We can do more, but only with your help.

Thank you for your donations and support!

Very truly yours,





01



06



07



03

January

- 01 Residents and guests kicked-off 2023 with a bang at our **Annual New Year's Eve Party** sponsored by TowneBank.

February

- 02 The **2nd Annual Emerging Artists Exhibit** kick off Black History Month. Featuring student artists from local colleges and universities. Awards and scholarships were given to the top three pieces of art on opening night.
- 03 **Celebrating Mardi Gras!** Such a fun time for our resident run groups to come together and have some fun and crown our annual King and Queen (residents), and Prince and Princess (team members).

March

- 04 We hosted our **Inaugural International Women's Day Breakfast** and featured a panel of key female leaders from our Board of Trustees and the surrounding community.

- 05 Residents gathered to unveil the **New Outdoor Grill** that was made possible thanks to a generous donation from residents, Mr. and Mrs. Bisek.

April

- 06 Lillie Gilbert, F&J Chair and Foundation Board Member, **presented the check for \$50,000 to the Fellowship Fund!** Team member, Tynisa Crudup accepted the first check of the year from F&J.

2023 M

May

- 07 Another favorite tradition – **Derby Day!** Residents and friends gather to enjoy mint juleps, show off their best hats and bet on the winning horse!
- 08 Residents and Team Members gathered to support **Rise Against Hunger**. Over 10,000 bags were filled to support hunger relief worldwide thanks to donations made to the **Outreach Fund**.



02



04



08



05



10



11



15



12

emories

June

- 09 **First Annual "What Would I Tell My Younger Self?" Forum** – Featuring residents sharing stories about the advice they would give to their younger selves. All who attended loved the event so much we are bringing it back in 2024!
- 10 A Foundation Favorite – **"Bringing Joy to Life"** Annual event celebrating the work of the Foundation in 2022. A great opportunity to hear testimonials from those who benefit from the Foundation.



09



13

July

- 11 **FORE! 20th Annual WC Golf Classic Raises Over \$70k!** 120 golfers + sponsors came together on this beautiful afternoon to enjoy the day and support our Foundation.

August

- 12 **Annual Team Member Giving Campaign Raises Over \$35,000!** 49% of our team members joined in!
- 13 A New Tradition Started... **Blues on the Bay!**

September

- 14 Our residents gathered for a week of tough competition for the **Annual WC Olympics**.



14

October

- 15 The first week of October kicked off **Active Aging Week!** One of the highlights of the week is the resident and team member croquet challenge!

November

- 16 **Annual Festival of Trees Event Raises over \$95,000 for the Foundation!** A perfect way to kick-off the holiday season!

December

- 17 **Annual Christmas Pageant!** Another favorite tradition to close out the year.



16



17

5



FY2023 KEY ACCOMPLISHMENTS



\$1,579,003
dollars raised



2,083
total gifts



\$750
average gift



632
number of donors



You are only limited
by your imagination.

2023 was another one for the books!

Every year I feel like we can't top the one before, but thanks to all of you, our donors, we end up finding more ways to Bring Joy to Life for our residents and the entire community! Thanks to our donors, we were able to create new foundation funds this year to enhance the experience of joyful living for our residents and had another record-breaking year for scholarship awards for our team members and their family members.

I hope you enjoy reading this 2023 Annual Stewardship Report and feel proud of all of the accomplishments that would not be possible without your generous support. We have certainly made a tremendous impact over the past 40 plus years and we have a lot more work yet to be done. Thanks for investing in our mission and allowing us to continue serving older adults in our community.

Ashley D. Allman

Ashley D. Allman, CFRE
Vice President, Development & Marketing,
Westminster-Canterbury on Chesapeake Bay





\$17,047,587
Total Assets



5-Star
Quality & Service



631
Residents



420
Total FTEs

Financial Performance

BALANCE SHEET

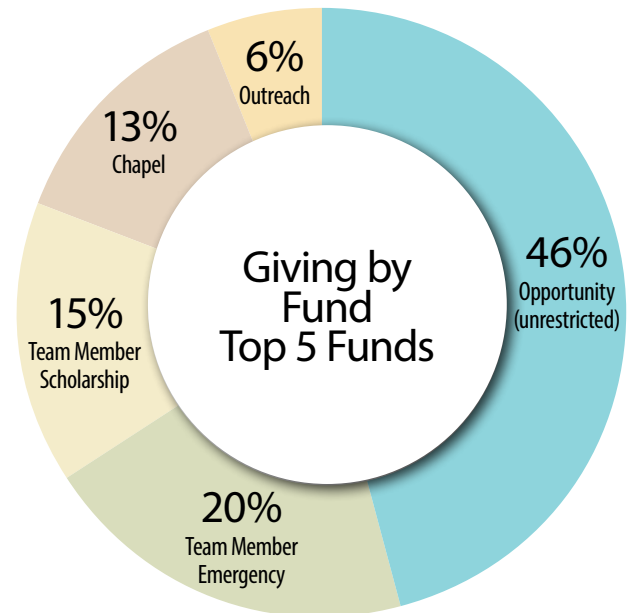
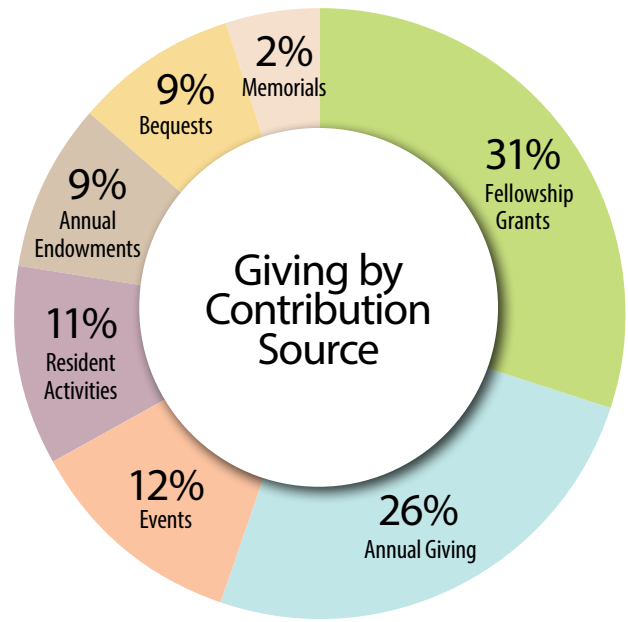
(SEPTEMBER 30, 2023 + 2022)

	2023	2022
CURRENT ASSETS		
Cash + Cash Equivalents	\$ 599,878	\$ 1,256,505
Pledge Receivables	\$ 238,649	\$ 222,155
– Total Current Assets	\$ 838,527	\$ 1,478,660
Investments	\$ 16,209,060	\$ 14,001,913
Total Assets	\$ 17,047,587	\$ 15,480,573
CURRENT LIABILITIES		
Accounts Payable + Accrued Expenses	\$ 84,817	\$ 90,567
– Total Current Liabilities	\$ 84,817	\$ 90,567
Deferred Annuity Obligations	\$ 289,333	\$ 331,494
Total Liabilities	\$ 374,150	\$ 422,061
NET ASSETS		
Total Liabilities	\$ 16,673,437	\$ 15,058,512
+ Net Assets	\$ 17,047,587	\$ 15,480,573

STATEMENT OF OPERATIONS

(SEPTEMBER 30, 2023 + 2022)

	2023	2022
REVENUE, GAINS + OTHER SUPPORT		
	\$ 1,945,367	\$ 2,265,270
Expenses		
Fellowship Payment	\$ 916,353	\$ 1,117,305
Programs – EAP, Chapel, Library, etc.	\$ 330,374	\$ 330,008
General & Administrative	\$ 64,978	\$ 80,560
Fundraising	\$ 328,051	\$ 318,830
Total Expenses	\$ 1,639,756	\$ 1,846,703
OPERATING INCOME	\$ 305,611	\$ 418,567
Other Changes in Net Assets	\$ 1,309,309	\$ (3,417,173)
Increase in Net Assets	\$ 1,614,920	\$ (2,998,606)
Net Assets – Beginning of Year	\$ 15,058,517	\$ 18,057,118
NET ASSETS END OF YEAR	\$ 16,673,437	\$ 15,058,512



Your donations make all the difference.

Join us in fulfilling the vision of our founders for Westminster-Canterbury to be a vibrant and inclusive community for older adults. Beyond the essential resources provided by mandatory fees, achieving this dream requires additional support.

Even before the construction of the East tower, our founders recognized the importance of

private donations for our Fellowship Assistance Program. Since its inception in 1992, the Foundation has been essential in leading fundraising efforts.

Every dollar donated, plays a crucial role in expanding our impact.

Whether it's enhancing amenities, sustaining existing programs, or launching new initiatives, your

charitable contributions reinforce our commitment to serving older adults throughout Hampton Roads.

Together, let's make sure that Westminster-Canterbury continues to thrive as a beacon of community support and compassionate care. Your generosity helps us navigate the complexities of the modern world while staying true to our timeless mission of service.



How Does My Gift Make a Difference?



80%
programs
+service



15%
fundraising



5%
management
+administration

Craig & Karen Bisek Share Why They Are Committed to Planned Giving



In September of 2014, lifelong Virginia Beach residents **Craig and Karen Bisek** made the proactive decision to move into Westminster-Canterbury at the relatively young ages of 64 and 65. Their early move was inspired by firsthand experience of the vibrant lifestyle at WC, as Karen's mother had lived there from 2009 to 2017. "We always wanted to live at WC when the time was right, and in 2014, it was time," Karen shared.

Craig and Karen found WC to be the perfect place for their active lifestyle. "There is something here for everyone to do, and if you don't want to join in, that's okay too," Karen noted. This blend of activity and choice made WC an ideal home for the Biseks.

After serving in Vietnam, Craig pursued his entrepreneurial spirit by studying business and starting a global enterprise that catered to military commissary exchanges. A career nurse, Karen joined the business in 1982, working in the office and demoing products. "As a family business, we've been very successful – growing from just me to over 200 employees," Craig said. Upon retirement, their daughter became the CEO, their son handles finances, their daughter-in-law became the financial comptroller, and their granddaughter works in various roles throughout the company as well.

The Biseks have always been committed to giving back. "We have been blessed over the years through our business, and our goal was to leave a legacy for

our children and the community," Craig said. The Westminster-Canterbury Foundation has been the perfect avenue for their continued giving. "We donate to many programs at WC some in our name, including the Fellowship Program, Employee Assistance Funds, Edge of Excellence Fund, the Festival of the Trees, and the F&J Sale. We also give anonymously to help others who may not financially qualify to join our community," Karen added.

"We believe in the mission of WC, Bringing Joy to Life – and when we give here, we can see the joy it brings to others. That is much more rewarding than just giving money to an outreach center where you have no idea where your it goes," Craig emphasized.

Recently, they funded a new Outdoor Grill at WC, which has become a popular spot among residents. "After moving here, the only thing we missed about our house was grilling out. (We cannot have a grill on our balconies.) Like us, newer residents are younger and enjoy flipping a steak at their leisure while socializing with a drink," Craig explained. The new grill has brought residents together, enhancing community spirit.

The benefits of living at WC are in abundance because of the generosity of those it serves. They are many avenues to giving at WC. "Ashley Allman does an excellent job of educating those on the many opportunities of gifting while living, and through bequests – the gift that keeps on giving after you pass.

Ashley is amazing to work with."

The Biseks trust the members of the Foundation leadership team to allocate their donations wisely. "The Foundation leadership team is amazing – true, honest, Christians. I trust them with my donations and how they choose to use them. When donating, you don't always have to specify where the funds go. Instead, you can leave that decision to the them. This is a true non-profit organization," said Craig.

Karen sums up their experience at WC beautifully: "It is amazing to live here many people feel living here is like living on a cruise ship. To us, it's like living in a five-star hotel. From the fitness center to environmental services, the staff is amazing and truly cares for us like family. We always encourage people to think about living here – the benefits, security, care, and peace of mind – can't be beat."

"We recommend moving in while you are younger to enjoy all the amenities at the best price. Once you are approved to move in, you will not need to worry again – the peace of mind is priceless! We love living here and highly recommend it!" Karen added.

Craig and Karen Bisek's story is a testament to the impact of planned giving and bequests. Their generosity not only enhances the lives of current residents but also ensures that future generations can enjoy the vibrant and fulfilling life at WC. The Biseks have left a legacy of community, connection, and care through their thoughtful contributions.



Planning for the future is essential, not only for the security of your loved ones but also for the causes you care about. Planned gifts, often referred to as “the gift that keeps on giving,” allow you to make significant contributions to Westminster-Canterbury on Chesapeake Bay while also providing you with financial benefits. By including WC in your estate planning, you ensure that our community can continue to thrive and serve future generations.



Common Types of Planned Gifts

at Westminster-Canterbury on Chesapeake Bay

Our **Charitable Gift Annuity (CGA)** program offers a fantastic opportunity for donors to make a meaningful gift while retaining income during their lifetimes. A CGA is a straightforward contract between the donor and the WC Foundation. The donor makes an irrevocable transfer of cash or property to the Foundation, and in return, the Foundation agrees to pay a fixed amount for the donor’s lifetime. It’s a win-win situation, providing financial security to the donor and a lasting benefit to our community.

Life Insurance provides a way for you to make a substantial gift with a minimal outlay of funds. You can donate an existing policy, whether fully or partially paid, or take out a new policy and name the

WC Foundation as the beneficiary. This method allows you to make a significant impact without affecting your current financial situation.



The cost of Leaving a Legacy in Your Will

A Legacy Gift via Your Will
Bequests are the most popular method of planned giving. They are simple to understand, provide peace of mind, and do not require you to part with any assets during your lifetime. Your attorney can easily include the appropriate language in your Will. You can contact **Ashley Allman** for sample language to share with your legal advisor. This ensures that your Legacy will continue to support Westminster-Canterbury for years to come.

Retirement Plans – donating through 401(k) or 403(b) retirement plans is one of the easiest ways to make a substantial contribution. By designating the WC Foundation as the full or partial beneficiary on your plan’s beneficiary designation forms, the Foundation will receive the assets upon your death. This method can also offer significant income and estate tax savings to your estate.



Planned gifts play a crucial role in ensuring the longevity & sustainability of our beautiful community. By planning today, you can make a lasting difference tomorrow.

SCAN QR code to learn more about our planned giving options.



At Westminster-Canterbury, our team members are the heart and soul of our community. Their dedication and compassion make a world of difference in the lives of our residents. One such extraordinary team member is **Inge Thieleman**, who embodies the spirit of service and resilience.



Inge joined the WC team in 2000, starting in the kitchen before being promoted to housekeeping, where she has flourished for 24 years. Originally from Germany, she met an American and married. Shortly after, they divorced and Inge found a new home in Virginia and career at WC, where she quickly became a beloved community member.

Inge's favorite part of her job is the residents. "They are amazing, so loving and caring, like family," she says. Inge takes pride in making each resident's home sparkle and shine, and she delights in their appreciation. Inge also goes the extra mile to make residents feel special by decorating their doors on birthdays and at Christmas. "I just love seeing the reactions when they open their door in the morning. They are genuinely happy, which makes me happy too!" she beams.

Even on days off, Inge is committed to helping others. She volunteers at a local homeless shelter and runs in marathons to raise funds for various causes, including the local homeless shelter, abused women and childrens center, and St. Jude's Cancer Center. "I have even visited the Great Wall of China and South Africa to run

marathons. I will try to help anyone I can," she says.

Inge's kindness and dedication are deeply rooted in her upbringing. "My mother always had an open-door policy, a clean shower, and a room with a bed for those who needed it. Her kindness was known locally. I miss her every day," Inge reminisces.

Despite facing health challenges, including a battle with cancer and multiple surgeries, Inge continues to serve the residents with unwavering commitment. "I went to work every day I had a radiation or chemo treatment because I love my residents so much. I made sure I was there for them," she explains.

The Team Member Assistance Fund has been a lifeline for Inge. "I have given to the fund from the beginning, and over the past year, I have needed it," she shares. Inge used the fund to help pay her medical bills. "Ashley Allman has been an amazing help by guiding me in the right direction and staying with me every step of the way. I am just so thankful for her!" This is the second time Inge has been a beneficiary of the fund. "The first time I used it, my mother was dying, and I needed to make a trip back to Germany," she recalls.

"I want to thank each and every person who donates to the Team Member Emergency Fund."

Inge encourages fellow employees to donate to the Assistance Fund. "It has been a lifesaver for me! The fund helps with various needs, including emergency situations, education assistance, and everyday essentials like rent or car repairs. "You will not miss the money you donate, as WC takes the amount directly from your paycheck. It is easy!" Inge explains.

"I want to say Thank You to each and every one of the residents for being so kind, nice, and understanding during my cancer and health issue journey. I always appreciate each and every one of my residents. I couldn't make it without them being so understanding. I love each and every one of them," Inge shares.

"Thank you, Inge, for being an extraordinary person and living out the Westminster-Canterbury mission of Bringing Joy to Life for those you touch daily."

Join us in making a meaningful impact. Help us continue to build a community where team members and residents thrive together fostering a caring and supportive environment for all.

At Westminster-Canterbury, our team members are extraordinary, truly loving our residents – and the feeling is certainly mutual. However, even our amazing staff may face unforeseen financial setbacks, pursue advanced certifications, or seek tuition reimbursement for broader educational goals.

The Foundation is committed to supporting these incredible individuals who care for our residents every day. Your generous donations to the Team Member Assistance Funds provide crucial support in times of need, empowering our staff to continue their invaluable work with confidence and peace of mind. Whether helping through a financial emergency, supporting professional development, or assisting with educational expenses, your contributions make a profound difference.

***Donate to the Team Member Assistance Funds today!
Together, we can foster a community where everyone thrives.***

Invest in Our Team by Supporting the Team Member Assistance Funds



Team Member
**Emergency
Grants**
Awarded



Team Members
Received
**Educational
Assistance**



Total funded
through the
Team Member
Emergency Fund



**Higher
Education
Institutions**
Attended
by Our
Scholarship
Recipients



Dispersed Among
Team Members
and their
Children for
**Educational
Assistance**

"Thank you dearly for your assistance with and investment in my education. I would not have been able to attend school this year without your generous support. I feel truly blessed to be a part of the WC Community. By continuing my education, I will be able to extend your generosity to others, while also giving back to the WC Community. Thank you!"

– Scholarship Recipient

"With this scholarship I will be able to focus on my studies and not stress about the bills. Working at WC has taught me a lot of valuable life lessons and I can say with certainty that I am a better person for working here. Thank you! I promise to make everyone at WC proud!"

– Scholarship Recipient



Westminster-Canterbury is proud to be one of only three Life Plan Communities in the Commonwealth of Virginia offering financial need-based support to residents at admission. Our Fellowship Fund is essential to our welcoming culture, enabling us to embrace new neighbors who might otherwise lack the financial means to join our vibrant community.

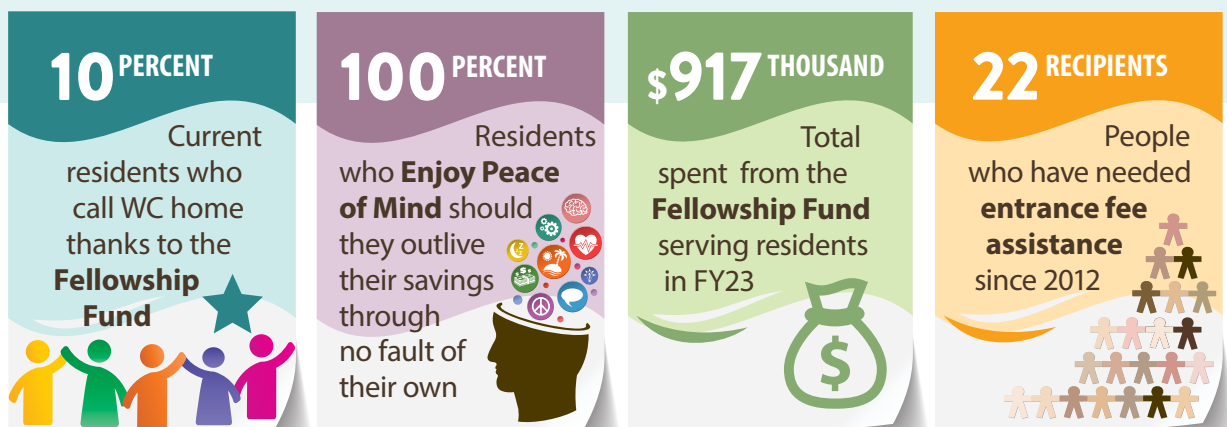
Invest in One-Another by Supporting the Fellowship Fund

Your generous donations to the Fellowship Fund provide qualified individuals the chance to live in our wonderful and caring community.



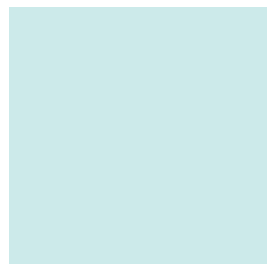

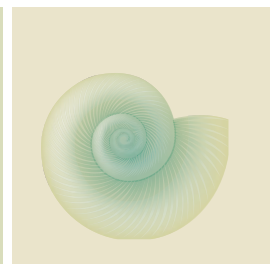

Many of our Fellowship Fund recipients have dedicated their careers to serving the citizens of Hampton Roads in modestly compensated, service-oriented jobs. Thanks to our Fellowship Fund's confidential safety net, all residents enjoy the peace of mind that comes from knowing they have lifelong financial security, even if they outlive their financial resources.

Join us in making a lasting impact. Your support ensures everyone, regardless of financial background, can experience the warmth, care, and security of Westminster-Canterbury.

Donate today and help us continue building a thriving community with Access and Peace of Mind.



*“The impact on my life since moving to Westminster-Canterbury six years ago is tremendous. The Fellowship Fund has given me a secure future and an added extra joy to my life.
– Thank You to All of the Donors!”*

	<p>\$11,000</p> <p>Donated to our Chapel Outreach Fund to help support local and international non-profits</p>		<p>Wonderful Friday Night Events in The Pub thanks to resident, Phil Richardson's generous support of the Friday Night Entertainment Fund!</p> <p>48</p>
	<p>26</p>  <p>Gifts made to the Meditation Garden</p>		<p>Newly created: the Judy Doyle Croquet Fund</p>  <p>1</p>

Elevate Our Community by Supporting the Edge of Excellence Fund

	<p><i>Memorable Moments</i> 75</p> <p>made for hospice patients thanks to the Hospice Enhancement Fund</p>		
	<p>10 Bands on the Bay concerts, funded by the Marian Taylor Entertainment Fund</p>	<p>Gifts made to the Landscape Fund to help beautify our campus</p> <p>5</p> 	

Your gifts to the Edge of Excellence Fund are vital in supporting the programs and activities that preserve and enhance the exceptional quality of Westminster-Canterbury. This fund also sustains cherished amenities like the Library, Chapel, and Meditation Garden, enriching the lives of our residents and fostering a vibrant, engaged community.

By donating to the Edge of Excellence Fund, you help maintain and improve the spaces and services that make our community special. Your support ensures that our residents continue to enjoy a high quality of life filled with social engagement and a strong sense of belonging.

Make a significant impact donate to the Edge of Excellence Funds today. Help us continue to build an exceptional, enriching community for everyone.

*Both of our boards ended 2023 with
100% participation for Annual Giving.*



Board of Trustees

Mrs. Lisa B.
Smith, Chair

Mr. Bernie
Boone, III

Mr. Richard C.
Burroughs

Mr. John D.
Cavanaugh

Mr. George L.
Compo

Mr. T. Clinton
Damuth

Mr. Ian Holder

Mr. Ron C.
Ripley

Mr. Charles D.
Robison, III

Mr. Bob Taylor

Dr. Armistead
Williams

Dr. George Wong

The Rt. Rev.
Susan Haynes,
Ex-Officio

Dr. Theresa Whibley

Annual Giving

From January 1, 2023 – December 31, 2023



Mr. Forrest Williams, Chair
Mr. Tom Barton
Mrs. Helen Bernd
Mr. Craig Bisek
Mr. Craig Cope

Mrs. Leslie Doyle
Ms. Cindy Earhart
Mrs. Laura Fulton
Mrs. Lillie Gilbert
Mr. Zeb Holt
Rev. Dick Keever

Mrs. Diane Kesterson
Rev. Jay Magness
Dr. Rick Quigg
Mr. George H. "Skip" Robert

Mr. Neil Rose
Mr. Jim Russell
Mrs. Joan Spore
Rev. Joe Varner
Mr. Les Watson
Mrs. Shirley Wharton

WC Society

\$25,000 and up, Bequests, and Planned Gifts



Mr.* & Mrs. William P. Alexander
Mr. & Mrs. Ralph K. Anderson*
Mr. & Mrs.* George Birdsong
Mr. & Mrs. Stuart Bossom
Mr. & Mrs. Ken Bower*
Mrs. Ernestine Boyce*
Mrs. Nell Braun*
Mr. & Mrs. Roy Brun*
Mrs. Margaret P. Camp*
Mrs. Elizabeth Campbell*
Mr. Richard Celley
Mrs. Elizabeth Chilton*
Mrs. Judith W. Cofer*
Mrs. Catherine Craft*
Mrs. Eleanor Cross*
Mrs. Nickie A. Duckhardt*
Capt. & Mrs. Lucian Evans
Mrs. Virginia Ferguson*

Dr. Charles Fletcher*
Mrs. Dorothy Gills*
Mrs. Jane Gresham
The Hon. & Mrs. Porter
Hardy, Jr.*
Mrs. Nancy C. Hoy*
Dr. Terry Jenkins*
Ms. Rachel K. Jiral
Rev. John Allen Johnson*
Mr. George Johnson*
Mrs. Geraldine Jones*
Mrs. Helen Kattwinkel*
Ms. Josie Keeter*
Reverend Dick & Evelyn
Keever
Mr.* & Mrs. J. Darrell Kennedy
Mrs. Evelyn Lasher*
Mrs. Jane Lawrence*

Mr. & Mrs. Joseph M.
Lawrence, II*
Mrs. Dorothy Lawson*
Mrs. Dorothy Madison*
Ms. Debbie Mandigo
Mrs. Birdie Mae Manning*
Mrs. Edna McLaughlin*
Mrs. Dorris W. McNeal*
Mrs. Elizabeth Miklos
Mrs. Margaret Milliken*
Mrs. Elnora Mikulin*
Dr. Agnes Moon*
Mrs. June H. Myers
Mr. & Mrs. Edward A. O'Neal
Mrs. Helen O'Neal*
Mr.* & Mrs. Haig H. Pakradooni
Mrs. Charlye Parsons*
Mrs. Mary Phelps

Mr. & Mrs.* Richard D.
Roberts
Mr. Jim Russell
Mrs. Vera Jean Russell
Mrs. Karen Scott
Mr. Kenneth R. Scott*
Mr. & Mrs. Paul H. Smith*
Mr.* & Mrs. Lucius Steere
Mr. Charles Stone*
Mrs. Marian Taylor*
Mrs. Marigrace Thomas
Mrs. Margaret D. Thornhill*
Mrs. Marie Tuttle*
Mr. Howard Waswo*
Mrs. Betty D. Williams*
Mrs. Mary Ann Williams
Mr. & Mrs. John Wolfe
Mrs. Anne Wood*

Partners in Joy

\$25,000+

Anonymous
Mr. & Mrs. Craig Bisek
Diocese of Southern Virginia
The Estate of Nancy Bernard
Lettie Pate Whitehead
Foundation
The Mary F. Ballentine Fund
Mrs. Ola Krueger
WCCB Flotsam-Jetsam Sale

Chairman's Circle

\$10,000-\$24,999

Mrs. Marcia Atherton
Mr. George Birdsong
Mr. & Mrs. Thomas Briggum
Mr. T. Clinton Damuth
Mrs. Rachel Jiral
Mrs. Joan Kennedy
Mrs. June H. Myers
Mr. Philip Richardson
Mrs. Carolyn Sutton
Ben & Barbara Unkle
Mr. & Mrs. John Wolfe

President's Circle

\$5,000-\$9,999

Tom & Patricia Barton
Mr. & Mrs. D. Tyner Brown
Mr. & Mrs. Crile Crisler
Ms. Linda Lowrance
Mr. & Mrs. Thomas Markley
Mr. & Mrs. Gerald Rex
Mr. & Mrs. Ronald Ripley
Mr. & Mrs. Jim Russell
Mr. Henry Watts

Ms. Linda Enders-Bailey
Bella Enoch
Mr. & Mrs. George Erikson
Mrs. Beverly Foote
Mr. & Mrs. Joe Gilbet
Mr. Donald D. Glenum, III
Ms. Nancy Good
Mrs. Barbara Gornto
Ms. Nancy Graham
Mrs. Helen Henrich
Mrs. Rebecca Hubiak
Mr. Morse Robert Jackson
Mrs. Jacqueline Jennell
Reverends Dick & Evelyn
Keever
Mrs. Reid Nottingham
Mr. & Mrs. Edward O'Neal
Mrs. Joyce Pickrel
Ms. Ruby Ann Pritchett
Rashkind Family Foundation
Mr. & Mrs. Kurt Rohdenburg
Mr. & Mrs. Skip Roberts
Mrs. Kay Roland
Dr. & Mrs. Paul F.
Schellhammer
Mrs. Lisa B. Smith
Mr. & Mrs. Merlin Statzer
Mr. Richard B. Thurmond & Dr.
Patricia Jennings
Mr. Ralph J. Vignski
Mr. & Mrs. William Vroman
Mr. & Mrs. William Waller, Jr.
Mr. Leslie Watson
Mrs. Shirley G. Wharton
Mrs. Anne M. Williams
Mr. & Mrs. Ros R. Willis
Mr. Forrest Williams
Woodpeckers of Westminster
Canterbury
Dr. David B. Young
RADM William M. Zobel

Foundation Society

\$1,000-\$4,999

Mr. & Mrs. John Armstrong
Mr. & Mrs. David Bernd
Thomas Briggum
Mr. Richard C. Burroughs
Mrs. Martha Cain
Ms. Elizabeth Cake
Capt. & Mrs. David M. Carre
Mr. & Mrs. Richard Crone
Mrs. Vickie Dellinger
Mrs. Betsy Durrant
Mrs. Faye Edwards

Fellowship Circle

\$500-\$999

Thomas Atkins
Mr. & Mrs. Thomas A. Barton, Jr.
Miss Clara Basnight
Ms. Shirley Bigney
Mr. & Mrs. Lynn Boerger
Mr. & Mrs. William Bogue
Mr. & Mrs. Doug Braidwood
Brighthouse Life Ins. Company

Rev. Albert G. Butzer, III
Mrs. Frances Carman
Mr. John D. Cavanaugh
Christ & St. Lukes Episcopal
Mr. & Mrs. John Creed
Mr. & Mrs. Michael Coyle
Ms. Leslie Doyle
Ms. Lynne Eklund
Ms. Carolyn Franz
Mrs. Laura Fulton
Mrs. Nina Garry
Mrs. Isabelle Hallam
Rev. Susan Haynes
Dr. William C. Hedrick
Mrs. Grace Heidt
Mr. Robert S. Herbert
Mrs. Lucy Hill
Mr. Eric Hodeen
Mrs. Jo Ann Hunter
Ms. Priscilla Kinley
Rev. James Magness
Mr. Robert W. McFarland
Ms. Nancy Mees
Mr. & Mrs. Ed O'Neal
Missions Possible
Mr. & Mrs. Jim Riess
Ms. Mary F. Robertson
Mr. & Mrs. Charles D. Robison, III
Mrs. Anne Savage
Mr. Donald W. Seale
Ms. Kauleen Simmons
Mr. & Mrs. Dale Sponaugle
Mr. & Mrs. Eric Steentofte
Mr. & Mrs. Meade Stone, Jr.
Ms. Mary J. Sufficool
Mr. Todd E. Sweigart
Dr. & Mrs. Robert B. Taylor
Mr. Tazewell G. Taylor
Mrs. Adeline Ungerman
Mr. & Mrs. J. Benjamin Unkle, Sr.
Mrs. Shirley W. Ventura
Mrs. Betsy Via
WCCB Great Decisions
Ms. Debra Willard
Mr. Jeffrey Wolfe

Fellowship Partner

\$250-\$499

Llewellyn S. Allison
Mr. & Mrs. William Bell
Mr. & Mrs. Dick Binford
Binns of Williamsburg

Mr. & Mrs. Peter Bondi
Mr. Elwood Boone, III
Ms. Carol Braley
Mrs. Lynne Coates
Mrs. Catherine Craft
Ms. Mary DeLaney
Mr. William DeWeese
Doralece Dullagha
Fidelity Charitable
Ms. Elaine B. Frank
Mrs. Margaret Gunter
H.D. Oliver Funeral Apt., Inc.
Ms. Mildred C. Harrell
Ms. Doris Johnson
Ms. Elizabeth Keller
Ms. Frances Kunschman
Ms. Anne Lewis
Dr. Lourdes Little
Ms. Ruby McNelley
Mrs. Constance Moerschell
Ms. Ruby Ann Pritchett
P3 Perilli Promotional Products
Ms. Jean M. Ruffin
Ms. Eileen Seeley
Ms. Sandra Tavss
Treasured Memories
Community Funding
Dr. & Mrs. David West
Mr. & Mrs. Sam Williams
Mr. & Mrs. William Wood
Ms. Mary O. Woodhouse

Fellowship Friend

Up to \$249

Alanton Garden Club
Mrs. Eunice Alexander
Amazon Smile
Mrs. Nancy Arias
Ms. Linda Bailey
Nancy Baillio
Peter Barnett
Mr. & Mrs. Jack Barton
Mrs. Jane Batten
Ms. Sandy Baylor
Mrs. JoAnn Beers
Mr. Sidney Berz
Ms. Alva W. Blanchard
Blue Crab Kids LLC
Mr. Wayne D. Bluser
Mr. Richard Bourdon
Ms. Mary Jane Brockwell
Dr. Townsend Brown, Jr.

Ms. Mary Buchanan
Thomas & Martha Bunch
Ms. Pamela Burgess
N. Carden
Ralph & Bonnie Carmines
Ms. Kathleen Carney
CARTE' INC
Mr. Richard L. Celley
Charlotte Potter Designs
Ms. Donna Clark
Ms. Lois Climenhaga
Ms. Pamela Coerse
Dr. Patricia Colby
Ms. Nancy B. Cole
Ms. Catherine Colgan
Norman & Susan Colpitts
Mr. George Compo
Mrs. Greta M. Conger
Mr. Craig Cope
Mr. & Mrs. David Costenbader
Ms. Marilyn Creamer-
Emilsson
Mr. Charles Culpepper
Ms. Louise Cunningham

Ms. Sandra Dance
Ms. Joan Daniels
Ms. Emma Davis
Mrs. Pearl Moyers-Dean
Ms. Bonnie Dennis
Mrs. Karen K. Dickenson
Ms. Jean Doscher
Thomas & Monica Dussman
Mr. Robert Duvall
Mr. William M. Eason
Mr. Edgar C. Eck, III
Ms. Johanna Paul Elder
Mr. John C. Ellis, Jr.
Capt. & Mrs. Lucian Evans
Mr. & Mrs. Robert Felty
Ms. Nancy J. Fitzpatrick
Ms. Maria Flach
Ms. Beverly Foote
Give Lively Foundation
Mrs. Josephine Fowler
Ms. Laura A. Fowler
Mr. Ken Franklin
Mr. Carter B. Furr
Mr. George Galgon

Mr. & Mrs. David Garraty
Mrs. Nina Garry
Ms. Carolyn Gavin
Ms. Christine P. Gills
Mrs. Sherry D. Gilson
Gladmist Glass Design Inc.
Ms. Nancy Good
Huey & Gail Goodman
Ms. Marie H. Goodman
Mrs. Nancy Graham
Mr. Stanley Grushkin
Ms. Greta I. Gustavson
Ms. Jennifer Harris
The Rev. Elizabeth G.
Hendricks
Ms. Sally-Louise Herzer
Mr. Richard Hickman
Hollomon Brown Funeral
Home
Ms. Sandra L. Hollowell
Mr. Dennis Hopkins
Ms. Martha Hortenstine
Ms. Virginia J. Howarth
Dr. Rosemarie Hughes

Mr. Steve Hutto
Mr. Michael Jennette
Ms. Susan A. Jones
Ms. Pat Joyce
Ms. Evelyn Kalagayan
Mrs. Barbara Karpaitis
Ms. Nan Kesler
Mr. & Mrs. Joseph Kesterson
Ms. Rebecca S. Lambert
Ms. Jane L. Lane
Ms. Judith Laster
Mr. Bruce Lawlor
Ms. Dixie Lehman
Ms. Anne LeVino
Ms. Joan Lottman
Charles & Kathryn Lunsford
Ms. Barbara Lux
Ms. Florence Mann
Mr. Dennis G. Manning
Mr. Douglas McCloud
Ms. Lola McCracken
McGuire Woods
Ms. Carole McNeel

*Resident Mary Daniels with
her performing artist for the
Annual TAO Storytellers event.*





Ms. Ruby McNelley
 Ms. Elizabeth Miklos
 Ms. Georgianna Miles
 Mr. John R. Miles
 Ms. Linda Morrison
 Mr. Laurence Moulis
 Mrs. Donna Nash
 Mr. Alfred C. Newbury
 Ms. Patricia A. Noden
 Mrs. Blanche B. Nusbaum
 Cristine J. O'Brien
 Ms. Carol Ormond
 Ms. Dona Overstreet
 Mr. Themis Pangalos
 Ms. Sarla Patel
 Mr. & Mrs. Michael
 Pawlukiewicz
 Mr. David Peckens
 Ms. Mary Peckens
 Mrs. Louise L. Peele
 Mr. & Mrs. Bill Petersen
 Mrs. Mary Phelps
 Ms. Margaret A. Poindexter

Ms. Towanda Porter
 Ms. Ann Preston
 Ms. Nancy Probert
 Ms. Suzanne Puryear
 Ms. Jo Ann Quisenberry
 Mr. Cecil M. Rawls
 Ms. Betty D. Redfern
 Mr. & Mrs. Walter B. Reid
 Ms. Jean Resch
 Ms. Nancy Ries
 Ms. Charmaine Rosenfield
 Ms. Brenda Rountree
 Ms. Connie Rutledge
 Ms. Cynthia Sanoba
 Mr. Howard G. Schornstein
 Raymond & Patricia Scott
 Ms. Diane Seidel
 Mr. James W. Sell
 Mr. Eugene Seward
 Mr. John S. Shannon
 Ms. Patricia Sherrill
 Mr. Thomas Shoemaker
 James & Gail Simone

Skin Lover's Soaps
 Ms. Margaret Skinner
 Mr. Richard Smith
 Ms. Petra E. Snowden
 Mr. Robert Sondej
 Mr. & Mrs. Robert Stahlin
 Ms. Donna Steiner
 Ms. Jill E. Stevenson
 Ms. Mary Ellen Stith
 Stephen Ann Story
 Ms. Ellen W. Stott
 Joan & Jack H. Stumborg
 Sunbeam Hunt Club
 Ms. Phyllis Super
 Ms. Cynthia Svane
 Ms. Jo- Anne Tempest
 Mr. & Mrs. Charles Tenney
 Ms. Elizabeth Thaden
 Gail & Randall V. Thompson
 Mr. & Mrs. William Thompson
 Salud U. Tiro
 Tocara
 Mr. Michael Tracy

Stephen & Beth Turnball
 Twisted Sisters Cupcakes, LLC
 Ms. Robin M. V&erMeer
 Rev. Joe Varner
 Ms. Shirley W. Ventura
 Virginia Beach Master
 Gardener Association
 Mr. & Mrs. William Vroman
 Ms. Barbara Wagner
 Mrs. Carol Walters
 Ms. Margaret Webster
 Ms. Ellen Westbrook
 Ms. Gloria D. White
 Mr. & Mrs. Bob Widener
 Mr. & Mrs. John Wiersch
 Robert W. Wilde
 Williams Mullen Clark &
 Dobbins
 Megan Windle
 Ms. Louise Wombolt
 Ms. April Woodard
 Mr. & Mrs. Frank Wool



TOP L-R: *Opus residents enjoying the back patio. WC residents during a fan favorite Follies performance. Residents Dick and Betty Binford during the Annual Army vs. Navy Croquet Challenge.*

MIDDLE L-R: *College Night! Residents gathered in their alma mater gear to relive their college days. Early Advantage Members enjoying the Annual Oyster Roast. Residents enjoyed some quality time with the hedgehogs during a one-of-a-kind playdate.*

BOTTOM L-R: *Afternoon Mahjong! Homemade pizza from our brick oven is always favorite of residents and team members. Another Follies Fan Favorite performance!*



2023 Team Member Campaign Donors

Jake Abston
 Maria Acevedo
 Ashley Allman
 Tracy Amet
 Lydia Anderson
 Scott Baker
 Zack Balestino
 Abby Beckwith
 Lorelee Bell
 Hannah Bell
 David Boadway
 Mark Borst
 Thomas Branch
 Faith Bress
 Michelle Bridges
 Mike Brown
 Paige Brown
 Brenda Brown
 LaKeesha Brown
 Rachael Buttler
 Helen Cabrera-Brown
 Cindy Calvert

Theresa Darden
 Joseph Daughtry
 Rochelle Dio
 Ellen Duckworth
 Latangeia Ector
 Keeshawna Elliott
 Alesia Ellis-Fuller
 Tracy Erlandson
 Adrian Fisher
 Stormy Fisher
 Abigail Fisher
 Emily Fleear
 Cindy Fournier
 Kelly Frank
 Julia Fretwell
 Wendy Fries
 Alyx Fye
 Safiyah Gauronshas
 Stephanie Grimaldi
 Cheryl Guison
 Ash Hamad
 Elaine Hambright

Milagros Imperial
 Laurie Inman
 Kenny Jakeman
 Angela James
 Edward Jones
 Cheryl Justice
 Sonja Kirkman
 Laura Kitchens
 Derek Krawiec
 Vickie LaFond
 Sherry Lappin
 Ed Lawson
 Rhonda Leonard
 Jeff Loncto
 Lorie Lyons
 Chantel Malli
 Bobby Mariner
 Serghina Marquez Ton
 Jose "Ping" Martinez
 Jose Paulo Martinez
 Gabriela Martinez
 Dan Mason

Sean Mulrihill
 Karhone Mundell
 Chris Murdoch
 Denzel Murph
 Krystal Murray
 David Myers
 Nicolas Myers
 Joshua Newman
 Linet Obura
 Sarah Paci
 Gregory Page
 Ginger Ploeger
 Mitchell Pruiksma
 Joan Punch
 Drake Ramirez
 Allan Redifer
 Susan Reed
 Katie Rhea
 Lisa Richardson
 Kristine Rienfeld
 Lauri Rodriguez
 Nlmfa Roque

Doketa Smith
 Avis Smith
 Rebecca Snipes
 Chloe Snitch
 Casey South
 Jenny Spivey
 John Spivey
 Denise Stolle
 Valoura Swygert
 Lloyd Sy
 Denise Tamaro
 Inge Thieleman
 Emma Thomas
 Jennifer Thompson
 Tim Tivvis
 Kimberly Trafton
 Janet Tuner
 Carolyn Tynes
 Ben Unkle
 Louis Vett
 Ashleigh Ward
 Tiara Watson



Anabelle Campbell
 Reid Celata
 Kelly Cho
 Pam Clapp
 Melinda Coley
 Dannika Collins
 Rebecca Condrey
 Tracie Craig
 Tori Crenshaw
 Tynisa Crudup
 Star Crudup

Nicole Hamlett
 Devin Harrell
 Shalene Hart
 Dawson Heine
 Justin Hertzog
 Alex Hill
 Gayle Hills
 Moira Hirst
 Susan Hopkins
 Adrian Hudak
 Gregory Hungerford

Bianca McDaniels
 Gary McHugh
 Jayda McKinney
 Luz McLaughlin
 Tina Miller
 Lori Millon
 Rafiq Miran
 Theresa Mitchell
 Chanta Montgomery
 Lisa Moore
 Eugenia Morris

Brenda Rosecrans
 Tara Rouse
 Roy Rushing
 Shawn Sawyer
 Payton Saxton
 Jack Saxton
 Leah Schoenberger
 John Seabrone
 Michael Seay
 Kevin Short
 Diana Smith

Krystle Watson
 Mary Werber
 Robin Whaley
 Demetra Williams
 Cynthia Wilson
 Juanita Wilson
 Christopher Wood
 Laura Wood
 Lexi Yale
 Carol York



TOP L-R: WC Residents showing off their best friends at the WC Dog Show during Active Aging Week. Resident Shirley Zartman ready for some ping pong!

MIDDLE L-R: Beach days are better when it is a family affair! Residents and their grandkids checking out our Renderer Virtual Reality headsets. Resident Chris Gerloff is all smiles at the WC Dog Show.

BOTTOM L-R: Goat Yoga Anyone? Residents and guests enjoyed this phenomenon out by the Bay. Resident Llewellyn Allison enjoying cuddling the yoga goats.



Chapel Fund

Mr. & Mrs. John Armstrong
Mr. & Mrs. Thomas A. Barton
Mr. & Mrs. Lynn Boerger
Ms. Marilyn Creamer-Emilsson
Ms. Sandra Dance
Ms. Jean Doscher
Thomas & Monica Dussman
Mrs. Faye Edwards
Mr. & Mrs. Lucian Evans
Mr. & Mrs. Robert Felty
Mrs. Josephine Fowler
Mr. George Galgon
Mr. & Mrs. Stanley Grushkin
H.D. Oliver Funeral Apt., Inc.
Mrs. Helen Henrich
Mr. Richard Hickman
Mr. Eric Hodeen
Hollomon Brown
Funeral Home
Mrs. Martha Hortenstine
Dr. Rosemarie Hughes
Mrs. Jacqueline Jennell
Mrs. Barbara Karpaitis
Ms. Nan Kesler
Mrs. Anne Lewis
Ms. Joan Lottman
Ms. Florence Mann
Mrs. Carole McNeel
Ms. Nancy Mees
Mrs. Constance Moerschell
Mr. & Mrs. Laurence Moulis
Mrs. Pearl Moyers-Dean
Mrs. Reid Nottingham
Mrs. Joyce Pickrel
Mr. & Mrs. Gerald Rex
Mrs. Kay Roland
Mrs. Charmaine Rosenfield
Dr. & Mrs. Paul F. Schellhammer
Mr. James W. Sell
Mr. & Mrs. Eugene Seward
Ms. Patricia Sherrill
Ms. Donna Steiner
Ms. Jill E. Stevenson
Mrs. Mary J. Sufficool
Mrs. Phyllis Super
Ms. Jo- Anne Tempest
Ms. Elizabeth Thaden
Mrs. Robin M. VanderMeer
Mrs. Shirley W. Ventura
Mrs. Betsy Via

Mr. & Mrs. William Waller, Jr.
Mrs. Carol Walters
Ms. Margaret Webster
Mr. & Mrs. Bob Widener
Mrs. Anne M. Williams
Mr. & Mrs. John Wolfe
Mrs. Louise Wombolt
Mr. & Mrs. William Wood

Catholic Programming Enhancement Fund

Ms. Frances Carman
Ms. Kathleen Carney
Mr. & Mrs. Michael Coyle
Mrs. Faye Edwards
Ms. Elaine B. Franke
Ms. Marie H. Goodman
Ms. Frances Kunschman
Dr. Lourdes Little
Ms. Ruby Ann Pritchett
Ms. Jean Resch
Dr. & Mrs. Paul F. S
chellhammer
Mrs. Eileen Seeley
Salud U. Tiro
Mr. & Mrs. J. Benjamin
Unkle, Sr.
Mrs. Shirley G. Wharton

Judy Doyle – Croquet Fund

Ms. Nancy Baillio
Mr. Peter Barnett
Mr. & Mrs. William Bell
Mr. & Mrs. Peter Bondi
Mr. Richard Bourdon
Mr. & Mrs. Thomas Briggum
Ms. Pamela Burgess
Ms. Elizabeth Cake
Mr. & Mrs. David Costenbader
Mr. Charles Culpepper
Ms. Emma Davis
Mrs. Pearl Dean
Ms. Bonnie Dennis
Mrs. Faye Edwards
Mr. & Mrs. George Erikson
Ms. Nancy J. Fitzpatrick
Mr. & Mrs. David Garraty
Mrs. Lillie Gilbert
Ms. Christine P. Gills
Mrs. Barbara Gornto

Mrs. Nancy Johnson
Ms. Evelyn Kalagayan
Mr. & Mrs. Bruce Lawlor
Mrs. Anne LeVino
Mrs. Lola McCracken
Mrs. Donna Nash
Mr. & Mrs. Michael
Pawlukiewicz
Ms. Mary Peckens
Mrs. Louise L. Peele
Mr. & Mrs. Bill Petersen
Ms. Karin Poole
Mr. Cecil M. Rawls
Ms. Betty D. Redfern
Mr. & Mrs. Walter B. Reid
Mr. Philip Richardson
Mrs. Annette Riess
Ms. Jean M. Ruffin
Ms. Constance Rutledge
Ms. Cynthia Sanoba
Ms. Anne Savage
Ms. Eileen Seeley
Ms. Petra E. Snowden
Mrs. Dale Sponaugle
Mrs. Louise Schellhammer
Ms. Elizabeth Thaden
Ms. Robin M. VanderMeer
Mrs. Betsy Via
Mrs. Carol Walters
Mr. & Mrs. William Wood
Mr. & Mrs. Frank Wool
Dr. David B. Young

Team Member – Education Fund

Mr. & Mrs. Doug Braidwood
Mr. & Mrs. Michael Coyle
Mr. & Mrs. George Erikson
Mrs. Joan Kennedy
Ms. Mary F. Robertson
Mrs. Adeline Ungerman

Team Member – Emergency Fund

Mr. & Mrs. John Armstrong
Mr. & Mrs. Doug Braidwood
Dr. Townsend Brown, Jr.
Mrs. Lynne Coates
Mr. & Mrs. Michael Coyle
Ms. Sandra Dance
Ms. Laura A. Fowler

Mrs. Margaret Gunter
Ms. Pat Joyce
Mrs. Joan Kennedy
Ms. Linda Lowrance
Mrs. Mary Phelps
Ms. Ruby Ann Pritchett
Ms. Mary F. Robertson
James & Gail Simone
Ms. Cynthia Svane
Stephen & Beth Turnball
Mr. and Mrs. J. Benjamin
Unkle, Sr.
Mr. Henry Watts
WCCB Woodpeckers

Festival of Trees Sponsors

Arange
Archer Mortgage
Beach Ford
Beach Hardwood Floors
Beltone
Cannability Consulting
Craig & Karen Bisek
Dick Thurmond & Patricia
Jennings
Dona Overstreet
Allied Storage & Moving
First Landing Auto Care
Functional Pathways
GGH Construction
GolfStats
Green Compass CBD
Henry & Eleanor Watts
Hospice House of Hampton
Roads PickleBall Committee
Howard Hanna
In Memory of Sue Birdsong
Jim & Jean Russell
John & Mary Wolfe
Linda Lowrance
Mancon
Melanie Hanson
Mermaid Winery
Mid Atlantic Long Term Care
Mike & Mike Services, Inc.
Mohawk Durkin
Morgan Stanley
Moves for Seniors
Nick's Bar & Grill
Ocean Eddies
Princess Anne Memorial Park

Roberts Electric
Rosewood/Kellum
Funeral Home
ServPro
SMI
Snellinger Construction
Taormia Enterprises
The Opus Group of
Virginia LLC
Tidewater Arts Outreach
Tile & Terrazzo
Tranquility
Union Mission
Virginia Arts Festival
Whiting Turner
Wilbanks Smith & Thomas
Wolcott Rivers Gates
WPL

Flower Guild Fund

Mrs. Joan Bondi
Ms. Debra Willard

Friday Night Entertainment Fund

Mr. Philip Richardson
Mrs. Carolyn Sutton

Golf Classic Sponsors

Alliance Medical Inc.
Atlantic Union Bank
Bay Power Solutions
Beach Ford
Century Concrete
Cintas
Courtney McBath
Craig & Karen Bisek
Damuth Trane
David and Helen Bernd
Flik
Functional Pathways
HKS
Ireland Electric
Jackson Lewis, PC
JLL
Kimley Horn
Leslie Doyle
Linda Lowrance
Marsh McLennan Agency
Phil Howard
Mike & Mike Services
Ping Pong Gives
R.J Nutter

Remedi
Ritter Grounds
Robert's Electric
RW Homes
Sentara Virginia Beach General
ServPro
South Bay Communications
& Sercurity
Taormia Enterprises
The Opus Group
Todd Jurich's Bistro
TowneBank
TriMark
Virginia Wesleyan University
Whiting Turner
Wilbanks, Smith & Thomas
Willcox Savage
Windstream
Wolcott Rivers Gates
WPL
Ziegler

Hospice Enhancement Fund

Mr. & Mrs. Dick Binford
Mr. & Mrs. Steve Durrant
Treasured Memories
Community Funding
Sunbeam Hunt Club
Mr. Ken Franklin
Williams Mullen Clark
& Dobbins
Mr. Robert W. Wilde
Mr. Donald W. Seale
Ms. Kauleen Simmons

Hospice House of Hampton Roads

Mr. George Birdsong
Mr. & Mrs. Steve Durrant
Mr. & Mrs. J. Benjamin
Unkle, Jr.
Mr. & Mrs. John Wiersch

Landscape Fund

Mrs. Marcia Atherton
Mr. & Mrs. Thomas Briggum
Mrs. Nina Garry
Ms. Nancy Good
Mr. & Mrs. Edward A. O'Neal
Mrs. Dale Sponaugle
Mrs. Mary J. Sufficool
Mrs. Carolyn Sutton

Virgina Beach Master
Gardener Association
Mr. & Mrs. William Vroman

Library Fund

WCCB Woodpeckers

Meditation Garden Fund

Mr. & Mrs. Jack Barton
Ms. Sandy Baylor
Mr. & Mrs. Bill Bell
Ms. Alva W. Blanchard
Mr. & Mrs. Lynn Boerger
Ralph & Bonnie Carmines
Mr. & Mrs. Crile Crisler
Mr. Edgar C. Eck, III
Ms. Linda Enders-Bailey
Mr. George Galgon
Mr. Steve Hutto
Ms. Susan A. Jones
Reverends Dick &
Evie Keever
Ms. Jane L. Lane
Mr. & Mrs. Thomas Markley
Mr. & Mrs. Edward A. O'Neal
Ms. Margaret A. Poindexter
Ms. Ann Preston
Ms. Betty D. Redfern
Mr. & Mrs. Jim Russell
Raymond & Patricia Scott
Mr. Robert Sondej
Gail & Randall V. Thompson
Mr. Michael Tracy
Mr. & Mrs. William Waller, Jr.
Mrs. Shirley G. Wharton
Mr. & Mrs. William Wood

Outreach Fund

Mr. & Mrs. Dick Binford
Mr. & Mrs. Lynn Boerger
Ms. Carol Braley
Ms. Elizabeth Cake
Christ and St. Lukes Episcopal
Ms. Lois Climenhaga
Ms. Marilyn Creamer-Emilsson
Ms. Sandra Dance
Mrs. Karen K. Dickenson
Mr. & Mrs. Steve Durrant
Mr. & Mrs. Stanley Grushkin
Mrs. Lucy Hill
Mr. Dennis Hopkins
Ms. Virginia J. Howarth
Mrs. Rebecca Hubiak

Mrs. Jacqueline Jennell
Mr. Michael Jennette
Reverends Dick & Evie Keever
Ms. Elizabeth Keller
Ms. Priscilla Kinley
Ms. Anne G. Lewis
Ms. Nancy Mees
Ms. Elizabeth Miklos
Mr. & Mrs. Edward A. O'Neal
Ms. Sarla Patel
Ms. Mary Peckens
Mrs. Kay Roland
Ms. Charmaine Rosenfield
Mr. & Mrs. Jim Russell
Ms. Eileen Seeley
Mr. & Mrs. Eugene Seward
Ms. Margaret Skinner
Ms. Ellen W. Stott
Mrs. Mary J. Sufficool
Mrs. Robin M. VanderMeer
Mrs. Gloria D. White
Mr. & Mrs. John Wolfe



GIFTS RECEIVED IN HONOR OF:

Scott Baker

Besty Via

Heather Benson

Linda Lowrance

Adrienne Hudak

Linda Lowrance

Willie Hurley

Louise Wombolt

Laurie Inman

Linda Lowrance

Jayda Mckinney

Cynthia Svane

Tim Tivvis

Henry Watts

Rev Jenny Spivey

Patricia Sherrill

Besty Via



**GIFTS RECEIVED
IN MEMORY OF:**

Joe Alfano

Mr. & Mrs. Michael Coyle

Joesph "Ron" Allison

Mr. & Mrs. Edward O'Neal

Mary Barnes

Alva W. Blanchard

Steve Hutto

Mr. & Mrs. Edward O'Neal

Raymond & Patricia Scott

Robert Sondej

Gail & Randall V. Thompson

Susan Beverly

Frank Wool

Virginia Buchanan

Edward A. O'Neal

Phyllis Cooper

Gloria D. White

Ann Costenbader

Nancy Good

Edward A. O'Neal

Pete Costenbader

Nancy Good

H. Dale Sponaugle

Dr. & Mrs. Robert B. Taylor

Mr. & Mrs. William Waller, Jr.

Suzette DeBell Rashkind

Rashkind Family Foundation

William DeWeese

Mr. & Mrs. Lynn Boerger

4th Floor Residents

Gloria D. White

Shirley Fentress

Michael Tracy

JoAnne Ferrell

Margaret Gunter

Christa Folkes

Greta I. Gustavson

Reverends Richard & Evie

Keever

John R. Miles

Helen "Anita" Forbes

Hollomon Brown

Funeral Home

Marge Galgon

Lynn Boerger

Ruby Ann Pritchett

Mr & Mrs. John Wolfe

Ann Hamill-Smith

Eric Hodeen

Elizabeth Hitt

Mr. & Mrs. Michael Coyle

Tommy Hitt

Margaret Gunter

Sarah Huber

Mr. & Mrs. Lynn Boerger

John D. Cavanaugh

Evelyn Hurd

Margaret Gunter

Richard Jencen

4th Floor Residents

Terry Jenkins

Mr. & Mrs. William Waller, Jr.

Mr. & Mrs. John Wolfe

Joan Kanter

H.D. Oliver Funeral Apt., Inc.

Jack Langley

Rebecca S. Lambert

Jane Lane

Edward A. O'Neal

Rita Liles

Edgar C. Eck, III

George Little

Maria Flach

Lordes Little

Edward O'Neal

Blanche B. Nusbaum

Ruby Ann Pritchett

Paul F. Schellhammer

Glenda Lovelace

Mary Jane Brockwell

Richard Hickman

Marge Mace

Mr. & Mrs. Lynn Boerger

Pat Joyce

James & Gail Simone

Stephen & Beth Turnball

Mr. Henry Watts

Debbie Mandigo

Llewellyn S. Allison

Alice S. Baylor

Bill Bell

Susan A. Jones

Reverends Richard & Evie

Keever

Mr. & Mrs. Thomas Markley

Mr. & Mrs. Jim Russell

H. Dale Sponaugle

Mr. & Mrs. William Waller, Jr.

Mrs. Shirley G. Wharton

Mr. & Mrs. John Wolfe

Majorie Phillips

Townsend Brown, Jr.

Lucy Poston-Hill

Thomas Atkins

Pamela Burgess

N. Carden

Patricia Colby

William M. Eason

John C. Ellis, Jr.

Nancy Good

Reverends Richard & Evie

Keever

Douglas McCloud

Mrs. Blanche B. Nusbaum

Cristine J. O'Brien

Carol Ormond

Nancy Probert

Brenda Rountree

Margaret Skinner

Richard Smith

Robert Stahlin

Ellen Westbrook

Mr. & Mrs. John Wolfe

Josphine Serlich-Fowler

JoAnn Beers

Doralece Dullagha

Sandra L. Hollowell

Mrs. Betsy Via

Korte Shoemaker

Thomas Shoemaker

Nancy Shoemaker

Thomas Shoemaker

Dee Sloan

Mr. & Mrs. Craig Bisek

Richard Hickman

William Thompson

Mr & Mrs. Edward A. O'Neal

Howard G. Schornstein

Gloria Thompson

David Via

Mr. & Mrs. Jack Barton

JoAnn Beers

Sidney Berz

Mr. & Mrs. Lynn Boerger

Richard Hickman

Morse Robert Jackson

Mrs. Blanche B. Nusbaum

Mr. & Mrs. Edward O'Neal

Betsy Via

Barbara Wagner

Mr. & Mrs. William Waller Jr.

Gloria D. White

Anne Williams

Alanton Garden Club

Mrs. Jane Batten

Thomas E. Martha Bunch

Johanna Paul Elder

Charles & Kathryn Lunsford

Barbara Lux

Mrs. Blanche B. Nusbaum

Dr. & Mrs. Paul F.

Schellhammer

John S. Shannon

Stephen & Ann B. Story

Joan & Jack H. Stumborg

Virginia Zaub

Gloria D. White

Thank You!

We gratefully acknowledge our donors for their support and generosity. Our team members have made every effort to ensure the accuracy of WC Foundation's Annual Stewardship Report. If any errors have occurred, please accept our sincere apology and contact the Westminster-Canterbury Foundation with any corrections at 757.496.1106.



L-R: Bay Tower Depositors enjoyed a pickleball demo at the PACCC to get ready for the new pickleball court. Our wonderful staff enjoying a team lunch. The Kayak and Paddle Board Ladies at the Mardi Gras Parade. Bay Tower Depositors learning more about the 19th Floor Wine Bar during a wine tasting. The Blue & Gold Croquet Challenge Toast. WC Olympic Swimmers were all smiles after a day of fun competition!



Social Accountability 20,087 volunteer hours

- AARP
- Aldersgate UMC
- All Saints Episcopal Church
- Alliance of Therapy Dogs
- Alzheimer's Association
- American Association of University Women
- AMVETS
- Baylake UMC
- Bayside Presbyterian Church
- Bishop Consecration in Williamsburg
- Blessing Bags
- Bridge Network of Churches
- Broad Bay Point Garden Club
- Brock Environmental Center
- Calvin Presbyterian
- Canine Companions for Independence
- Cape Henry Women's Club
- CHKD
- Christ & St. Luke's Church
- Chrysler Museum
- Church of the Advent
- Church of the Good Shepherd
- Church of the Holy Family
- CLASP
- Community United Methodist Church
- DECA
- Deliver Forward Day by Day
- Eastern Shore Chapel
- Elizabeth River District UMC Women
- Elmwood Cemetary
- Emmanuel Episcopal Church
- Faith Inclusion Network of HR
- Faith Works Coalition
- First Aid
- First Baptist Church Norfolk
- First Landing State Park
- Fleeting Printing
- Food Bank
- Frances Asbury Methodist Church
- Friends of False Cape State Park
- Garden Club of Norfolk
- Grace Bible Church
- Grace Episcopal Church
- Hampton Roads Naval Museum
- Holy Family Church
- Hope House
- ILR
- Jacox Elementary
- JCOG
- John B. Dey
- Judeo Christian Outreach
- Lee's Friends
- Leeland Seminary
- LGBT Life Center
- LINNUS/Quilting
- Little Creek Catholic Chapel
- Lynnhaven Colony Congregational Church/ United Church of Christ
- Lynnhaven River Now
- Meals on Wheels
- Mustard Seed
- Navy Marine Corps Relief Society/baby hats/knitting
- Norfolk Botanical Gardens
- Norfolk Cemetry
- Preservation Society
- Norfolk Christian School
- Norfolk IRS
- Old Donation Episocopal Church
- Plaza Middle School
- Prince of Peace Lutheran Church
- Princess Anne Counry Club
- Prision Ministry
- Providence Presbyterian
- Red Cross
- Retired Federal Employees
- Rise Against Hunger
- Royster Church
- Samaritan House
- Sandler Center
- Scott Memorial UMC
- Seatack
- Sentara Healthcare School of Nursing
- Sentara Leigh
- Sentara Princess Anne Hospital
- Sentara Virginia Beach General Hospital
- Sheila's Place
- Sign Club
- St. Johns Baptist Church
- St. Mark's Church
- Thalia Elementary School
- Thalia UMC
- The Williams School
- Tidewater Arts Outreach+
- Tidewater Quilt Guild
- Turtles
- Union Mission
- Unity Church Choir
- VA Hospital
- VACCRA
- Victoria Baptist Church
- Virginia Assoc. of Free Will Baptists
- Virginia Aquarium
- Virginia Beach Election Office
- Virginia Beach Free Clinic
- Virginia Beach Grief Counseling
- Virginia Beach Public Library
- Virginia Beach United Methodist Church
- Virginia Microboard Assoc.
- Virginia Native Plant Society
- Virginia Opera
- Virginia Stage Company
- Virginia Symphony Orchestra
- Virginia Voices Choir
- Virginia Wesleyan Univeristy
- VITA-TCE





TOP L-R: Shari Friedman and Lucy Newman sat down with CoastLive to talk all things Hospice House and their First Annual Pickleball Tournament. Guests enjoying our Annual Oyster Roast for wait list members. Residents made a trip to see antique cars and planes during Active Aging Week. Team members enjoying free snocones during the Employee Giving Campaign.

BELOW: Team WC takes the trophy home for the Annual Cornhole Tournament. Residents gathered for Super Bowl Sunday! Mark Borst is ready for his time in the dunk tank! Residents and guests enjoying a visit by the sea wall. Guests and residents learning about our new Resident Hub.





We are a faith-based organization serving the needs of older adults of all beliefs, their families, and the broader community.

EDITORS

Ashley Allman

Vice President
Development & Marketing

Tynisa Crudup

Development Coordinator

CREATIVE & DESIGN

Dyan Trent

Real Creative Solutions

PRINTING

Jones Printing

For additional information

Westminster-Canterbury
on Chesapeake Bay
3100 Shore Drive
Virginia Beach, VA 23451

757.496.1106
wcbay.com



A Special Thank You to Our Sponsors!

Platinum Sponsors

Jim & Jean Russell
Ben & Barbara Unkle
Shirley G. Wharton

Richard Thurmond & Dr. Patricia Jennings
In Honor of Eleanor Watts
John & Mary Wolfe

Silver Sponsors

Glenum Giving Foundation

Dr. Robert B. & Anita D. Taylor



757.496.1106 | www.wcbay.com/the-foundation
3100 Shore Drive, Virginia Beach, VA 23451

